



ASSESSMENTS | Data-driven accuracy in hiring, career navigation, and team building.

CAREER NAVIGATION MADE EASY

ACCURATE. EASY TO USE. ALIGNED WITH O*NET.

JOFI is all about job fit. Discover how this powerful toolset supports career coaches by streamlining career navigation with accurate job-related insights that empower individuals to find their place in the world of work.



PREDICTIVE VALIDITY

Using peer-reviewed psychology research and the vast resources of the O*NET, JOFI provides data-based predictive validity to identify the jobs that are the uniquely right fit for each participant. It leverages insights from three assessments:

- 1. Personality Traits:** A 20-minute test that measures 15 traits and summarizes for the “Big Five” personality dimensions: Agreeableness, Conscientiousness, Extraversion, Emotional Stability and Openness.
- 2. Career Interests:** A 15-minute test that measures 15 areas and summarizes scores for the career interest dimensions from the John Holland RIASEC model: Realistic, Investigative, Artistic, Social, Enterprising, and Conventional.
- 3. Thinking Skills:** A 20-minute assessment of cognitive traits in three areas: Reading, Forms and Math. The result is an overall score that is an indicator of critical thinking and problem solving.

HELPING CAREER COACHES AND COUNSELORS SUCCEED

JOFI® combines the most predictive elements from the three assessments into one overall Five-Star rating to indicate job fit.

Equipped with these insights, coaches and counselors are better able to help job seekers, students and employees find their place in the world of work.

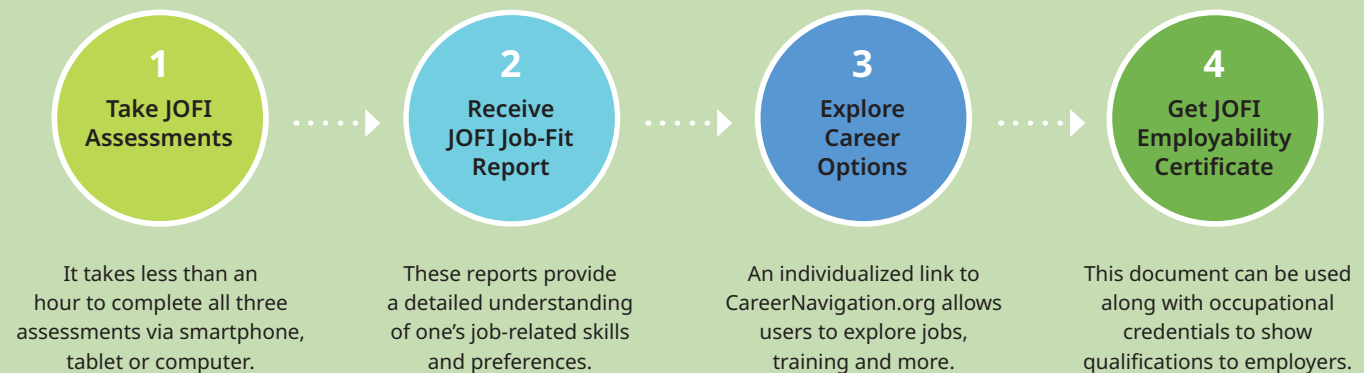
JOFI is easy to use for coaches and job seekers alike. Assessments can be assigned with a phone number and an email. Results are immediately available. A high-quality user experience contributes to completion rates and caseload management.

JOFI is accurate. Occupational data draws from the O*NET, the world's largest occupational database. Exploration is made easy with a customized link to CareerNavigation.org.

JOFI is reliable. The assessments are based on the most current psychological research, in accordance with American Psychological Association (APA) Standards and Society of Industrial and Organizational Psychology (SIOP) best practices.

BETTER CAREER NAVIGATION WITH JOFI

Upon completion of the assessments, participants receive a JOFI Job-Fit report that provides comprehensive data on their personality strengths, career interests – and a list of top fit jobs. A customized link to CareerNavigation.org supports career exploration individually or in discussion with coaches and counselors.



THE ADVANTAGES OF JOFI

- JOFI provides excellent support for career coaching with a focus on self-awareness and option exploration.
- Students and job seekers can quickly see where they fit best in the world of work – and where they are most likely to thrive.
- Reports identify top 15 groups of occupations representing the 20% of jobs where an individual is most likely to be successful.
- Reports, use of career navigation website, and employability certificate are available to all test takers at no additional cost.

HOW TO GET STARTED

1. Contact our team to begin your **90-day free trial**
2. Schedule a virtual meeting to set up your account and receive training
3. Launch your JOFI pilot

CONTACT:

James W. Guest, JOFI Product Manager
support@jofiscore.com

Learn more: jobfitscore.com